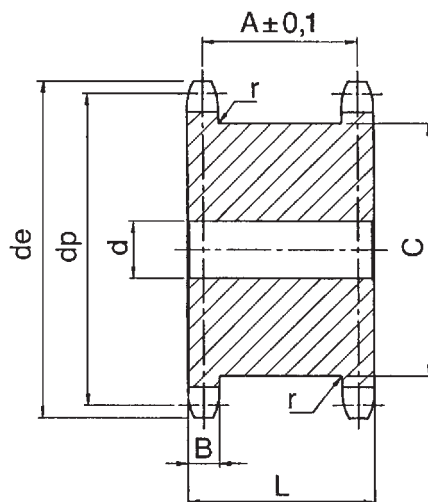




CORONE DOPPIE PER DUE CATENE SEMPLICI



Materiale C45 UNI 7845

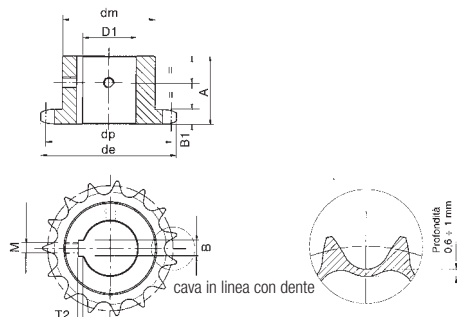
TIPO	Z	De	Dp	d	A	B h14	C max	L	r
3/8"x7/32" R. 6.35 06 B-1	13	43.45	39.80	10	20.3	5.3	28	25.5	0.4
	15	49.46	45.81	10	20.3	5.3	34	25.5	0.4
	17	55.49	51.84	12	20.3	5.3	40	25.5	0.4
	18	58.30	54.85	12	20.3	5.3	43	25.5	0.4
	19	61.52	57.87	12	20.3	5.3	46	25.5	0.4
	20	64.30	60.89	12	20.3	5.3	49	25.5	0.4
	21	67.56	63.91	15	20.3	5.3	52	25.5	0.4
	23	73.60	69.95	15	20.3	5.3	59	25.5	0.4
1/2"x5/16" R. 8.51 08 B-1	13	57.56	53.07	12	24.8	7.2	37	32	0.6
	15	65.57	61.08	12	24.8	7.2	45	32	0.6
	17	73.61	69.12	12	24.8	7.2	53	32	0.6
	18	78.00	73.14	12	24.8	7.2	57	32	0.6
	19	81.65	77.16	12	24.8	7.2	62	32	0.6
	20	86.00	81.19	12	24.8	7.2	65	32	0.6
	21	89.70	85.21	15	24.8	7.2	70	32	0.6
	23	97.76	93.27	15	24.8	7.2	78	32	0.6
5/8"x3/8" R. 10.16 10 B-1	13	73.17	66.33	15	27.9	9.1	48	37	0.6
	15	83.19	76.35	15	27.9	9.1	58	37	0.6
	17	93.23	86.39	15	27.9	9.1	68	37	0.6
	18	98.30	91.42	15	27.9	9.1	72	37	0.6
	19	103.29	96.45	15	27.9	9.1	79	37	0.6
	20	108.40	101.49	19	27.9	9.1	82	37	0.6
	21	113.35	106.51	19	27.9	9.1	89	37	0.6
	23	123.43	116.59	19	27.9	9.1	99	37	0.6
3/4"x7/16" R. 12.07 12 B-1	13	87.13	76.90	20	33.9	11.1	59	45	0.6
	15	99.16	91.63	20	33.9	11.1	71	45	0.6
	17	111.20	103.67	20	33.9	11.1	83	45	0.6
	18	118.00	109.71	20	33.9	11.1	88	45	0.6
	19	123.27	115.74	20	33.9	11.1	95	45	0.6
	20	129.70	121.78	20	33.9	11.1	101	45	0.6
	21	135.35	127.82	20	33.9	11.1	107	45	0.6
	23	147.43	139.90	20	33.9	11.1	119	45	0.6
1"x17.02 R. 15.88 16 B-1	13	117.26	106.14	24	47.8	16.2	78	64	0.8
	15	133.29	122.17	24	47.8	16.2	95	64	0.8
	17	149.35	138.23	24	47.8	16.2	111	64	0.8
	18	157.00	146.28	24	47.8	16.2	119	64	0.8
	19	165.44	154.32	24	47.8	16.2	127	64	0.8
	20	173.00	162.38	24	47.8	16.2	135	64	0.8
	21	181.54	170.42	24	47.8	16.2	143	64	0.8
	23	197.66	186.54	24	47.8	16.2	160	64	0.8
25	213.78	202.66	24	47.8	16.2	176	64	0.8	



PIGNONI SEMPLICI CON DENTI TEMPRATI AD INDUZIONE CON FORO + CAVA + FORI VITE

3/8" x 7/32" 06B-1

per catene a rulli secondo
DIN 8187 - ISO/R 606



Denti temprati ad induzione HRC 45 ÷ 53

PIGNONE

LARGHEZZA DENTE PIGNONE B_1 5.3 mm

CATENA

PASSO 9.525 mm

LARGHEZZA INTERNA 5.72 mm

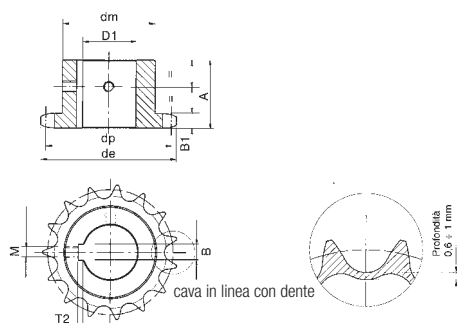
RULLO \emptyset 6.35 mm

MATERIALE: C 45 UNI 7845

Z	d_e	d_p	d_m	A	D_1	Z	d_e	d_p	d_m	A	D_1	Z	d_e	d_p	d_m	A	D_1
12	40.45	36.80	25	25	12	18	58.3	54.85	43	28	14	23	73.7	69.95	52	28	15
			29		14						15						16
			30		15						16						18
			31		16						18						19
13	43.5	39.80	28	25	12						19						20
					14						20						22
					15						22						24
					16						24						25
					18	19	61.6	57.87	45	28	15	24	76.7	72.97	54	28	18
14	46.5	42.80	31	25	12						16						19
					14						18						20
					15						19						22
					16						20						24
					18						22						25
15	49.5	45.81	34	25	14						24						28
					15	20	64.3	60.89	46	28	15						30
					16						16						18
					18						18						20
					19						19						22
					20						20						24
					22						22						25
					24						24						28
16	52.3	48.82	37	28	14						25						30
					15	21	67.6	63.91	48	28	15						18
					16						16						20
					18						18						22
					19						19						24
					20						20						25
					22						22						28
					24						24						30
17	55.5	51.83	40	28	14						25	27	85.7	82.05	60	28	20
					15						16						22
					16						18						24
					18						19						25
					19						20						28
					20						22						30
					22						24						20
					24						25						22
					24						25						24
					24						25						25
					24						25						28
					24						25						30

1/2" x 5/16" 08B-1

per catene a rulli secondo
DIN 8187 - ISO/R 606



Denti temprati ad induzione HRC 45 ÷ 53

PIGNONE

LARGHEZZA DENTE PIGNONE B_1 7.2 mm

CATENA

PASSO 12.7 mm

LARGHEZZA INTERNA 7.75 mm

RULLO \emptyset 8.51 mm

MATERIALE: C 45 UNI 7845

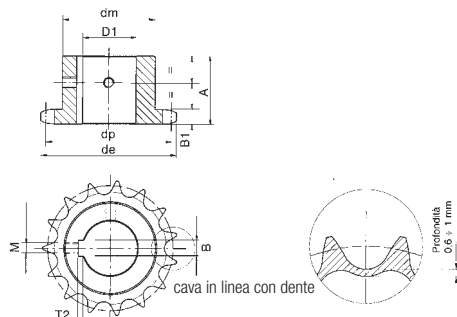
Z	d_e	d_p	d_m	A	D_1	Z	d_e	d_p	d_m	A	D_1	Z	d_e	d_p	d_m	A	D_1
12	53.9	49.07	33	28	12	17	74	69.11	52	28	15	23	98.1	93.27	70	28	20
					14						16						22
					15						18						24
					16						19						25
					18						20						28
					19						22						30
					20						24						32
					22						25						35
					24						28						38
13	57.9	53.06	37	28	12	18	77.8	73.14	56	28	16	24	102.1	97.29	70	28	20
					14						18						22
					15						19						24
					16						20						25
					18						22						28
					19						24						30
					20						25						32
					22						28						35
					24						30						38
14	61.6	57.07	41	28	14						32	25	105.8	101.33	70	28	20
					15						35						22
					16	19	82	77.16	60	28	19						24
					18						20						25
					19						22						28
					20						24						30
					22						25						32
					24						28						35
					25						30						38
15	65.9	61.09	45	28	14						32	27	114	109.4	70	30	22
					15						35						25
					16	20	85.8	81.19	64	28	19						28
					18						20						30
					19						22						32
					20						24						35
					22						25						38
					24						28						20
					25						30						22
					28						32						24
					30						35						25
16	69.5	65.1	50	28	15						35	30	126.3	121.5	80	30	25
					16	21	90.1	85.22	68	28	19						28
					18						20						30
					19						22						32
					20						24						35
					22						25						38
					24						28						20
					25						30						22
					28						32						24
					30						35						25



PIGNONI SEMPLICI CON DENTI TEMPRATI AD INDUZIONE CON FORO + CAVA + FORI VITE

5/8" x 3/8" 10B-1

per catene a rulli secondo
DIN 8187 - ISO/R 606



Denti temprati ad induzione HRC 45 ÷ 53

PIGNONE

LARGHEZZA DENTE PIGNONE B_1 9.1 mm

CATENA

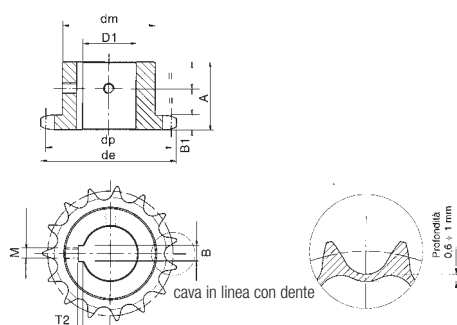
PASSO 15.875 mm
LARGHEZZA INTERNA 9.65 mm
RULLO Ø 10.16 mm

MATERIALE: C 45 UNI 7845

Z	d _e	d _p	d _m	A	D ₁	Z	d _e	d _p	d _m	A	D ₁	Z	d _e	d _p	d _m	A	D ₁
12	68.2	61.34	42	30	16	17	93.2	86.39	60	30	20	21	113.4	106.52	75	30	20
					19						22						22
					20						24						24
					22						25						25
					24						28						28
					25						30						30
					28						32						32
					30						35						35
			51		30												38
			51		30												40
13	73.2	66.32	47	30	16	18	98.3	91.42	70	30	20	23	123.4	116.58	80	30	20
					19						22						22
					20						24						24
					22						25						25
					24						28						28
					25						30						30
					28						32						32
					30						35						35
					30						38						38
					30						40						40
14	78.2	71.34	52	30	16	19	103.3	96.45	70	30	20	24	128.5	121.62	80	30	20
					19						22						22
					20						24						24
					22						25						25
					24						28						28
					25						30						30
					28						32						32
					30						35						35
					30						38						38
					30						40						40
15	83.2	76.36	57	30	19	20	108.4	101.49	75	30	20	25	133.5	126.66	80	30	22
					20						22						24
					22						24						25
					24						25						28
					25						28						30
					28						30						32
					30						32						35
					30						35						38
					30						38						40
					30						40						42
16	88	81.37	60	30	20	20					22	25					22
					22						24						25
					22						25						28
					24						28						30
					25						30						32
					28						32						35
					30						35						38
					30						38						40
					30						40						42

3/4" x 7/16" 12B-1

per catene a rulli secondo
DIN 8187 - ISO/R 606



Denti temprati ad induzione HRC 45 ÷ 53

PIGNONE

LARGHEZZA DENTE PIGNONE B_1 11.1 mm

CATENA

PASSO 19.05 mm
LARGHEZZA INTERNA 11.68 mm
RULLO Ø 12.07 mm

MATERIALE: C 45 UNI 7845

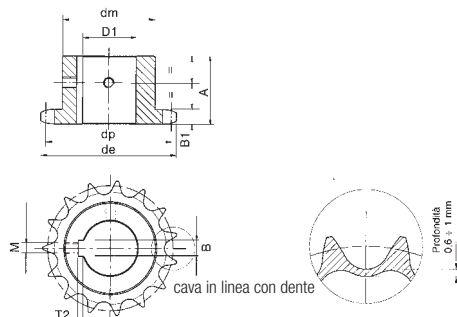
Z	d _e	d _p	d _m	A	D ₁	Z	d _e	d _p	d _m	A	D ₁	Z	d _e	d _p	d _m	A	D ₁
12	81.8	73.6	52	35	20	17	111.2	103.67	80	35	22	23	147.4	139.90	90	40	28
					22						25						30
					22						28						32
					24						30						35
					25						32						38
					28						35						40
					30						38						42
					35						40						45
					35												48
					35												50
13	87.1	79.60	58	35	20	18	118.0	109.71	80	35	22	24	154.1	145.94	90	40	28
					22						25						30
					24						28						32
					25						30						35
					28						32						38
					30						35						40
					35						38						42
					35						40						45
14	93.8	85.61	64	35	20	19	123.3	115.75	80	35	25	25	159.5	152.00	90	40	28
					22						28						30
					24						30						32
					25						32						35
					28						35						38
					30						38						40
					35						40						42
					35						45						45
15	99.2	91.63	70	35	20	20	129.7	121.78	80	35	25	25					28
					22						28						30
					24						30						32
					25						32						35
					28						35						38
					30						38						40
					35						40						42
					35						45						45
16	105.5	97.65	75	35	20	21	135.4	127.82	90	40	28						28
					22						30						30
					25						32						32
					28						35						35
					30						38						38
					32						40						40
					35						42						42
					35						45						45
					38						48						48
					40						50						50



PIGNONI SEMPLICI CON DENTI TEMPRATI AD INDUZIONE CON FORO + CAVA + FORI VITE

1" x 17.02 16B-1

per catene a rulli secondo
DIN 8187 - ISO/R 606



Denti temprati ad induzione HRC 45 ÷ 53

PIGNONE

LARGHEZZA DENTE PIGNONE B₁ 16.2 mm

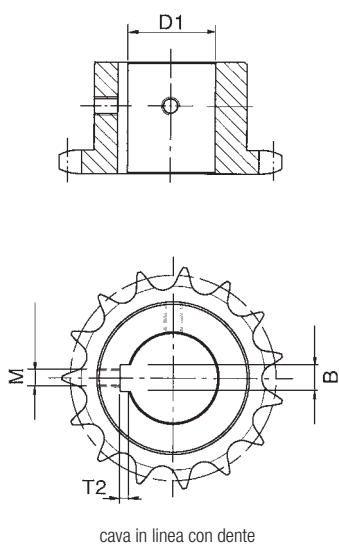
CATENA

PASSO 25.4 mm
LARGHEZZA INTERNA 17.02 mm
RULLO Ø 15.88 mm

MATERIALE: C 45 UNI 7845

Z	d _e	d _p	d _m	A	D ₁	Z	d _e	d _p	d _m	A	D ₁	Z	d _e	d _p	d _m	A	D ₁
12	109.71	98.14	69	40	25	16	141.0	130.20	100	45	30	20	173.2	162.38	100	45	30
					28						32						32
					30						35						35
					32						38						38
					35						40						40
					38						42						42
					40						45						45
					42						48						48
					45						50						50
					48												
					50												
13	117.2	106.14	78	40	25	17	149.4	138.22	100	45	30	21	181.6	170.43	110	50	30
					28						32						32
					30						35						35
					32						38						38
					35						40						40
					38						42						42
					40						45						45
					42						48						48
					45						50						50
					48												
					50												
14	125.7	114.15	84	40	25	18	157.0	146.28	100	45	30	23	198.1	186.1	110	50	30
					28						32						32
					30						35						35
					32						38						38
					35						40						40
					38						42						42
					40						45						45
					42						48						48
					45						50						50
					48												
					50												
15	133.3	122.17	92	40	28	19	165.5	154.33	100	45	30	25	214.2	202.66	110	50	30
					30						32						32
					32						35						35
					35						38						38
					38						40						40
					40						42						42
					42						45						45
					45						48						48
					48						50						50
					50												

Cave DIN 6885 - UNI 6604



D ₁ Foro	B Larghezza cava	T ₂ Profondità cava	M Viti
Ø 12 H7 ^{+0.018} ₋₀	4 H9 ^{+0.030} ₋₀	1,8 ^{+0.10} ₋₀	M4
Ø 14 H7 ^{+0.018} ₋₀	5 H9 ^{+0.030} ₋₀	2,3 ^{+0.10} ₋₀	M4
Ø 15 H7 ^{+0.018} ₋₀	5 H9 ^{+0.030} ₋₀	2,3 ^{+0.10} ₋₀	M4
Ø 16 H7 ^{+0.018} ₋₀	5 H9 ^{+0.030} ₋₀	2,3 ^{+0.10} ₋₀	M4
Ø 18 H7 ^{+0.018} ₋₀	6 H9 ^{+0.030} ₋₀	2,8 ^{+0.10} ₋₀	M5
Ø 19 H7 ^{+0.021} ₋₀	6 H9 ^{+0.030} ₋₀	2,8 ^{+0.10} ₋₀	M5
Ø 20 H7 ^{+0.021} ₋₀	6 H9 ^{+0.030} ₋₀	2,8 ^{+0.10} ₋₀	M5
Ø 22 H7 ^{+0.021} ₋₀	6 H9 ^{+0.030} ₋₀	2,8 ^{+0.10} ₋₀	M5
Ø 24 H7 ^{+0.021} ₋₀	8 H9 ^{+0.036} ₋₀	3,3 ^{+0.20} ₋₀	M6
Ø 25 H7 ^{+0.021} ₋₀	8 H9 ^{+0.036} ₋₀	3,3 ^{+0.20} ₋₀	M6
Ø 28 H7 ^{+0.021} ₋₀	8 H9 ^{+0.036} ₋₀	3,3 ^{+0.20} ₋₀	M6
Ø 30 H7 ^{+0.021} ₋₀	8 H9 ^{+0.036} ₋₀	3,3 ^{+0.20} ₋₀	M6
Ø 32 H7 ^{+0.025} ₋₀	10 H9 ^{+0.036} ₋₀	3,3 ^{+0.20} ₋₀	M8
Ø 35 H7 ^{+0.025} ₋₀	10 H9 ^{+0.036} ₋₀	3,3 ^{+0.20} ₋₀	M8
Ø 38 H7 ^{+0.025} ₋₀	10 H9 ^{+0.036} ₋₀	3,3 ^{+0.20} ₋₀	M8
Ø 40 H7 ^{+0.025} ₋₀	12 H9 ^{+0.043} ₋₀	3,3 ^{+0.20} ₋₀	M10
Ø 42 H7 ^{+0.025} ₋₀	12 H9 ^{+0.043} ₋₀	3,3 ^{+0.20} ₋₀	M10
Ø 45 H7 ^{+0.025} ₋₀	14 H9 ^{+0.043} ₋₀	3,8 ^{+0.20} ₋₀	M12
Ø 48 H7 ^{+0.025} ₋₀	14 H9 ^{+0.043} ₋₀	3,8 ^{+0.20} ₋₀	M12
Ø 50 H7 ^{+0.025} ₋₀	14 H9 ^{+0.043} ₋₀	3,8 ^{+0.20} ₋₀	M12



TAPER-LOCK® PIGNONI

SEMPLICI

DOPPI

PASSO	SEMPLICI						DOPPI					
	Codice passo	Z	per Bussola	Esecuzione Tipo	Dm Mozzo	A	Codice passo	Z	per Bussola	Esecuzione Tipo	Dm Mozzo	A
	031-17 •	17	1008	1	44.5	22	032-17	17	1008	2	42.5	22
	031-18	18	1008	1	43	22	032-18	18	1008	2	43	22
	031-19 •	19	1008	1	46	22	032-19	19	1008	2	46	22
	031-20	20	1008	1	46	22	032-20	20	1008	2	48	22
	031-21 •	21	1008	1	46	22	032-21	21	1008	2	49	22
	031-22	22	1108	1	50	22	032-22	22	1108	2	52	22
	031-23 •	23	1210	1	62	25	032-23	23	1210	2	58	25
	031-24	24	1210	1	62	25	032-24	24	1210	2	61	25
	031-25 •	25	1210	1	63	25	032-25	25	1210	2	64	25
	031-26	26	1210	1	60	25	032-26	26	1210	2	65	25
	031-27 •	27	1210	1	60	25	032-27	27	1210	2	65	25
	031-28	28	1210	1	60	25	032-28	28	1210	2	65	25
	031-30 •	30	1210	1	63	25	032-30	30	1210	2	65	25
	031-38	38	1210	1	73	25	032-38	38	1610	2	76	25
	031-45	45	1210	1	73	25	032-45	45	1610	2	89	25
	031-57*	57	1210	6	83	25	032-57*	57	1610	7	89	25
	031-76*	76	1210	6	83	25	032-76*	76	1610	7	89	25
	031-95*	95	1210	6	83	25	032-95*	95	1610	7	89	25
	031-114*	114	1215	6	83	38	032-114*	114	1615	7	89	38
	041-15 •	15	1008	1	46	22	042-15	15	1008	2	46	22
	041-16	16	1108	1	50	22	042-16	16	1108	2	50	22
	041-17 •	17	1210	1	59.5	25	042-17	17	1210	2	56	25
	041-18	18	1210	1	60	25	042-18	18	1210	2	58	25
	041-19 •	19	1210	1	63	25	042-19	19	1210	2	64	25
	041-20	20	1610	1	71	25	042-20	20	1610	2	66	25
	041-21 •	21	1610	1	71	25	042-21	21	1610	2	71	25
	041-22	22	1610	1	70	25	042-22	22	1610	2	76	25
	041-23 •	23	1610	1	76	25	042-23	23	1610	2	79	25
	041-24	24	1610	1	70	25	042-24	24	2012	2	84	32
	041-25 •	25	1610	1	76	25	042-25	25	2012	2	87	32
	041-26	26	1610	1	70	25	042-26	26	2012	2	85	32
	041-27 •	27	1610	1	76	25	042-27	27	2012	2	87	32
	041-28	28	2012	1	90	32	042-28	28	2012	2	87	32
	041-30 •	30	2012	1	90	32	042-30	30	2012	2	87	32
	041-38	38	2012	1	102	32	042-38	38	2012	2	102	32
	041-45	45	2012	1	102	32	042-45	45	2012	2	111	32
	041-57*	57	2012	6	111	32	042-57*	57	2012	7	111	32
	041-76*	76	2012	6	111	32	042-76*	76	2012	7	111	32
	041-95*	95	2012	6	111	32	042-95*	95	2012	7	111	32
	041-114*	114	2517	6	124	45	042-114*	114	2517	7	124	45
	051-13 •	13	1008	1	46	22						
	051-14	14	1108	1	52	22						
	051-15 •	15	1210	1	63	25	052-15	15	1210	3		25.5
	051-16	16	1610	1	70	25	052-16	16	1610	3		25.5
	051-17 •	17	1610	1	71	25	052-17	17	1610	3		25.5
	051-18	18	1610	1	75	25	052-18	18	1610	3		25.5
	051-19 •	19	1610	1	76	25	052-19	19	1610	3		25.5
	051-20	20	1610	1	75	25	052-20	20	1610	3		25.5
	051-21 •	21	1610	1	76	25	052-21	21	1610	3		25.5
	051-22	22	1610	1	76	25	052-22	22	1610	3		25.5
	051-23 •	23	1610	1	76	25	052-23	23	1610	3		25.5
	051-24	24	2012	1	90	32	052-24	24	2012	2	90	32
	051-25 •	25	2012	1	90	32	052-25	25	2012	2	90	32
	051-26	26	2012	1	85	32	052-26	26	2012	2	90	32
	051-27 •	27	2012	1	90	32	052-27	27	2012	2	90	32
	051-28	28	2012	1	90	32	052-28	28	2012	2	90	32
	051-30 •	30	2012	1	90	32	052-30	30	2012	2	90	32
	051-38	38	2012	1	102	32	052-38	38	2517	2	108	45
	051-45	45	2012	1	111	32	052-45*	45	2517	7	110	45
	051-57*	57	2012	6	111	32						
	051-76*	76	2012	6	111	32						
	051-95*	95	2517	6	124	45						
	051-114*	114	2517	6	124	45						
	061-13 •	13	1210	1	63	25						
	061-14	14	1610	1	71	25	062-14	14	1610	3		30.3
	061-15 •	15	1610	1	71	25	062-15	15	1610	3		30.3
	061-16	16	1610	1	75	25	062-16	16	1610	3		30.3
	061-17 •	17	1610	1	76	25	062-17	17	1610	3		30.3
	061-18	18	2012	1	90	32	062-18	18	2012	2	89	32
	061-19 •	19	2012	1	90	32	062-19	19	2012	2	95	32
	061-20	20	2012	1	90	32	062-20	20	2517	2	108	45
	061-21 •	21	2517	1	102	45	062-21	21	2517	2	108	45
	061-22	22	2517	1	102	45	062-22	22	2517	2	108	45
	061-23 •	23	2517	1	108	45	062-23	23	2517	2	108	45
	061-24	24	2517	1	108	45	062-24	24	2517	2	108	45
	061-25 •	25	2517	1	108	45	062-25	25	2517	2	108	45
	061-26	26	2517	1	108	45	062-26	26	2517	2	108	45
	061-27 •	27	2517	1	108	45	062-27	27	2517	2	108	45
	061-28	28	2517	1	108	45	062-28	28	2517	2	108	45
	061-30 •	30	2517	1	108	45	062-30	30	2517	2	108	45
	061-38	38	2517	1	124	45	062-38	38	3020	2	152	51
	061-45	45	2517	1	124	45	062-45*	45	3020	7	154	51
	061-57*	57	2517	6	124	45	062-57*	57	3020	7	160	51
	061-76*	76	2517	6	124	45	062-76*	76	3020	7	160	51
	061-95*	95	2517	6	124	45	062-95*	95	3020	7	160	51
	061-114*	114	2525	6	124	63	062-114*	114	3030	7	160	76

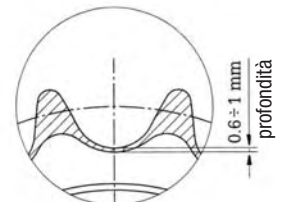
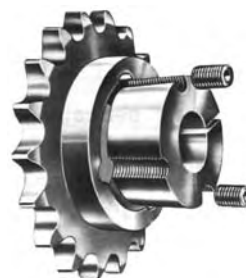


TAPER-LOCK® PIGNONI

SEMPLICI							TRIPLI						
PASSO	Codice passo	Z	per Bussola	Esecuzione Tipo	Dm Mozzo	A	PASSO	Codice passo	Z	per Bussola	Esecuzione Tipo	Dm Mozzo	A
	081-13	13	1610	1	78	25		063-15	15	1615	5		49.8
	081-14	14	1610	1	78	25		063-17	17	2012	5		49.8
	081-15 •	15	1610	1	78	25		063-19	19	2012	5		49.8
	081-16	16	2012	1	90	32		063-21	21	2517	5		49.8
	081-17 •	17	2012	1	90	32		063-23	23	2517	5		49.8
	081-18	18	2517	1	108	45		063-25	25	2517	5		49.8
	081-19 •	19	2517	1	108	45		063-27	27	3020	4	140	51.0
	081-20	20	2517	1	108	45		063-30	30	3020	4	140	51.0
	081-21 •	21	2517	1	108	45		063-38	38	3020	4	140	51.0
	081-22	22	2517	1	108	45		063-45	45	3020	4	140	51.0
	081-23 •	23	2517	1	108	45		063-57*	57	3020	8	160	51.0
	081-24	24	2517	1	108	45		063-76*	76	3020	8	160	51.0
	081-25 •	25	2517	1	108	45		063-95*	95	3030	8	165	76.0
	081-26	26	2517	1	108	45		063-114*	114	3030	8	165	76.0
	081-27 •	27	2517	1	108	45							
	081-28	28	2517	1	108	45							
	081-30 •	30	3020	1	160	51		083-17	17	2517	5		79.6
	081-38	38	3020	1	160	51		083-19	19	3020	5		79.6
	081-45	45	3020	1	160	51		083-21	21	3020	5		79.6
	081-57*	57	3020	6	160	51		083-23	23	3525	5		79.6
	081-76*	76	3020	6	160	51		083-25	25	3525	5		79.6
	081-95*	95	3020	6	160	51		083-27	27	3525	5		79.6
	081-114*	114	3030	6	150	76		083-30	30	3525	5		79.6
								083-38*	38	3535	8	178	89
								083-45*	45	4040	8	216	102
								083-57*	57	4040	8	216	102
								083-76*	76	4040	8	216	102
								083-95*	95	4040	8	240	102
								083-114*	114	4545	8	260	115
	101-15 •	15	2517	1	108	45							
	101-17 •	17	2517	1	108	45							
	101-19 •	19	2517	1	108	45							
	101-21 •	21	2517	1	108	45							
	101-23 •	23	2517	1	108	45							
	101-25 •	25	2517	1	108	45							
	101-30 •	30	3020	1	160	51							
	101-38 *	38	3020	6	160	51							
DOPPI													
PASSO	Codice passo	Z	per Bussola	Esecuzione Tipo	Dm Mozzo	A							
	082-15	15	2012	3		47.7							
	082-16	16	2517	3		47.7							
	082-17	17	2517	3		47.7							
	082-18	18	2517	3		47.7							
	082-19	19	2517	3		47.7							
	082-20	20	2517	3		47.7							
	082-21	21	3020	2	143	51							
	082-22	22	3020	2	150	51							
	082-23	23	3020	2	160	51							
	082-24	24	3020	2	166	51							
	082-25	25	3020	2	175	51							
	082-26	26	3020	2	175	51							
	082-27	27	3020	2	175	51							
	082-28	28	3020	2	175	51							
	082-30	30	3020	2	175	51							
	082-38*	38	3030	7	160	76							
	082-45*	45	3535	7	160	76							
	082-57*	57	3535	7	175	89							
	082-76*	76	3525	7	175	89							
	082-95*	95	4040	7	216	102							
	082-114*	114	4040	7	216	102							

• DISPONIBILI ANCHE CON DENTI TEMPRATI

* GHISA = G 20 - UNI 5007

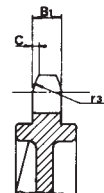
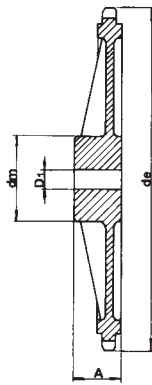
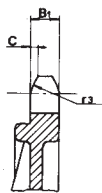
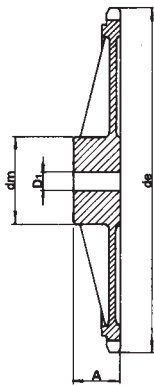


MATERIALE: ACCIAIO = C 45 UNI 7845

Denti temprati ad induzione HRC 45 ÷ 53



PIGNONI IN GHISA: G 20 UNI 5007



* RINFORZATI

3/8" x 7/32" per catene a rulli secondo
DIN 8187 - ISO/R 606

PIGNONE

RAGGIO DENTE r_3	10	mm
LARGHEZZA RAGGIO C	1	mm
LARGHEZZA DENTE PIGNONE B_1	5.3	mm
LARGHEZZA DENTE PIGNONE b_1	5.2	mm
LARGHEZZA DENTE PIGNONE B_2	15.4	mm
LARGHEZZA DENTE PIGNONE B_3	25.6	mm

CATENA

PASSO	9.525	mm
LARGHEZZA INTERNA	5.72	mm
RULLO \emptyset	6.35	mm

Z	SEMPLICI			DOPPI			TRIPLI		
	d_e	d_p	d_m D ₁ A	d_m D ₁ A	d_m D ₁ A				
38	119.5	115.35	70 20 32	80 20 40	90 24 56				
45	140.7	136.55	70 20 32	80 20 40	90 24 56				
57	176.9	172.91	70 20 32	80 20 40	90 24 56				
76	234.9	230.49	70 20 32	80 20 40	100 24 56				
*95	292.5	288.08	80 20 40	90 20 45	100 24 56				
*114	349.6	345.68	80 20 40	95 20 45	100 24 56				
*150	459.2	454.82	90 24 45	100 24 50	125 24 60				

1/2" x 5/16" per catene a rulli secondo
DIN 8187 - ISO/R 606

PIGNONE

RAGGIO DENTE r_3	13	mm
LARGHEZZA RAGGIO C	1.3	mm
LARGHEZZA DENTE PIGNONE B_1	7.2	mm
LARGHEZZA DENTE PIGNONE b_1	7	mm
LARGHEZZA DENTE PIGNONE B_2	21	mm
LARGHEZZA DENTE PIGNONE B_3	34.9	mm

CATENA

PASSO	12.7	mm
LARGHEZZA INTERNA	7.75	mm
RULLO \emptyset	8.51	mm

Z	SEMPLICI			DOPPI			TRIPLI		
	d_e	d_p	d_m D ₁ A	d_m D ₁ A	d_m D ₁ A				
38	158.6	153.80	70 20 40	90 24 50	100 24 60				
45	188	182.07	70 20 40	90 24 50	100 24 60				
57	236.4	230.54	70 20 40	90 24 50	100 24 60				
*76	313.3	307.33	80 24 40	100 24 56	100 24 60				
*95	390.1	384.11	80 24 45	100 24 56	120 24 67				
*114	466.9	460.90	80 24 45	100 24 63	120 24 67				

5/8" x 3/8" per catene a rulli secondo
DIN 8187 - ISO/R 606

PIGNONE

RAGGIO DENTE r_3	16	mm
LARGHEZZA RAGGIO C	1.6	mm
LARGHEZZA DENTE PIGNONE B_1	9.1	mm
LARGHEZZA DENTE PIGNONE b_1	9	mm
LARGHEZZA DENTE PIGNONE B_2	25.5	mm
LARGHEZZA DENTE PIGNONE B_3	42.1	mm

CATENA

PASSO	15.875	mm
LARGHEZZA INTERNA	9.65	mm
RULLO \emptyset	10.16	mm

Z	SEMPLICI			DOPPI			TRIPLI		
	d_e	d_p	d_m D ₁ A	d_m D ₁ A	d_m D ₁ A				
38	199.2	192.24	80 20 40	100 30 50	100 32 60				
45	235	227.58	80 20 40	100 30 50	100 32 60				
57	296	288.18	90 24 45	100 30 56	100 32 63				
76	392.1	384.16	90 24 50	100 30 63	110 35 67				
*95	488.5	480.14	100 24 56	110 30 63	125 35 70				
*114	584.1	576.13	100 24 56	125 30 70	125 35 80				

3/4" x 7/16" per catene a rulli secondo
DIN 8187 - ISO/R 606

PIGNONE

RAGGIO DENTE r_3	19	mm
LARGHEZZA RAGGIO C	2	mm
LARGHEZZA DENTE PIGNONE B_1	11.1	mm
LARGHEZZA DENTE PIGNONE b_1	10.8	mm
LARGHEZZA DENTE PIGNONE B_2	30.3	mm
LARGHEZZA DENTE PIGNONE B_3	49.8	mm

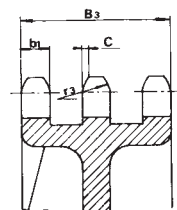
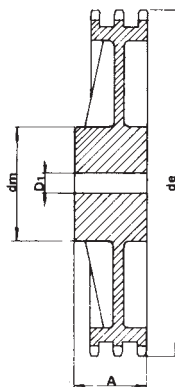
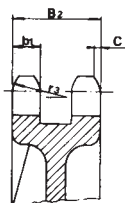
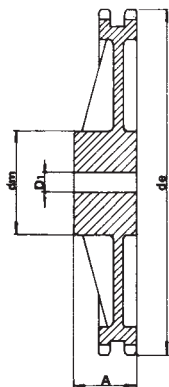
CATENA

PASSO	19.05	mm
LARGHEZZA INTERNA	11.68	mm
RULLO \emptyset	12.07	mm

Z	SEMPLICI			DOPPI			TRIPLI		
	d_e	d_p	d_m D ₁ A	d_m D ₁ A	d_m D ₁ A				
38	239	230.69	100 24 56	110 30 63	140 30 70				
45	282.5	273.1	100 24 56	110 30 63	140 30 70				
57	354	345.81	100 30 56	120 30 63	140 40 70				
76	469.9	460.99	100 30 56	135 30 63	160 40 75				
*95	585.1	576.17	100 30 65	135 30 70	170 40 82				
*114	700.6	691.36	100 30 65	135 30 70	170 50 82				



PIGNONI IN GHISA: G 20 UNI 5007



1" x 17.02 mm per catene a rulli secondo
DIN 8187 - ISO/R 606

PIGNONE

RAGGIO DENTE r_3	26	mm
LARGHEZZA RAGGIO C	2.5	mm
LARGHEZZA DENTE PIGNONE B_1	16.2	mm
LARGHEZZA DENTE PIGNONE b_1	15.8	mm
LARGHEZZA DENTE PIGNONE B_2	47.7	mm
LARGHEZZA DENTE PIGNONE B_3	79.6	mm

CATENA

PASSO	25.4	mm
LARGHEZZA INTERNA	17.02	mm
RULLO \emptyset	15.88	mm

Z	SEMPLICI			DOPPI			TRIPLI				
	d_e	d_p	d_m	D_1	A	d_m	D_1	A	d_m	D_1	A
30	254.0	243.00	110	30	65	125	40	75	145	40	90
38	320.0	307.59	110	30	65	140	40	75	160	45	100
45	377.0	364.13	125	30	70	150	40	75	160	45	100
57	474.0	461.08	125	35	70	170	40	90	165	45	100
76	627.0	614.65	140	35	80	175	40	95	200	45	110
95	781.0	768.22	140	40	80	175	45	95	200	50	110
*114	933.0	921.81	150	40	80	175	45	95	200	50	115

1" 1/4 x 3/4" per catene a rulli secondo
DIN 8187 - ISO/R 606

PIGNONE

RAGGIO DENTE r_3	32	mm
LARGHEZZA RAGGIO C	3.5	mm
LARGHEZZA DENTE PIGNONE B_1	18.5	mm
LARGHEZZA DENTE PIGNONE b_1	18.2	mm
LARGHEZZA DENTE PIGNONE B_2	54.6	mm
LARGHEZZA DENTE PIGNONE B_3	91	mm

CATENA

PASSO	31.75	mm
LARGHEZZA INTERNA	19.56	mm
RULLO \emptyset	19.05	mm

Z	SEMPLICI			DOPPI			TRIPLI				
	d_e	d_p	d_m	D_1	A	d_m	D_1	A	d_m	D_1	A
30	318.9	303.75	115	35	70	130	40	80			
38	399.6	384.49	125	35	70	140	45	90	180	56	110
45	470.3	455.17	125	35	70	140	45	90			
57	591.5	576.36	135	40	80	160	50	100	180	60	125
76	783.5	768.32	140	40	90	180	50	100			

1" 1/2 x 1" per catene a rulli secondo
DIN 8187 - ISO/R 606

PIGNONE

RAGGIO DENTE r_3	38	mm
LARGHEZZA RAGGIO C	4	mm
LARGHEZZA DENTE PIGNONE B_1	24.1	mm
LARGHEZZA DENTE PIGNONE b_1	23.6	mm
LARGHEZZA DENTE PIGNONE B_2	72	mm
LARGHEZZA DENTE PIGNONE B_3	120.3	mm

CATENA

PASSO	38.1	mm
LARGHEZZA INTERNA	25.4	mm
RULLO \emptyset	25.4	mm

Z	SEMPLICI			DOPPI			TRIPLI				
	d_e	d_p	d_m	D_1	A	d_m	D_1	A	d_m	D_1	A
30	379.5	364.5	130	40	85						
38	476.2	461.39	140	45	90	180	45	100	200	60	150
45	561.2	546.2	140	45	90						
57	706.5	691.63	160	45	100	200	55	110	200	60	150
76	936.9	921.98	170	45	100	220	55	120	250	70	150

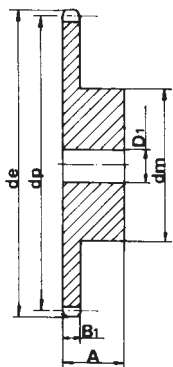
Non si costruiscono pignoni in ghisa nella versione ASA

* = PIGNONI SEMPLICI CON DOPPIO RINFORZO



PIGNONI SEMPLICI INOX

PER CATENE A RULLI SECONDO DIN 8187 - ISO/R 606

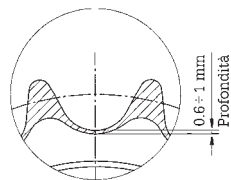


PASSO	Z	12	13	15	16	17	18	19	20	21	23	25	30
3/8" x 7/32"	de	40.00	43.00	49.30	52.30	55.30	58.30	61.30	64.30	68.00	73.50	80.00	94.70
	dp	36.80	39.79	45.81	48.82	51.83	54.85	57.87	60.89	63.91	69.65	76.00	91.12
	dm	25.00	28.00	34.00	37.00	40.00	43.00	45.00	46.00	48.00	52.00	57.00	60.00
	D1	8.00	10.00	10.00	10.00	10.00	10.00	10.00	10.00	10.00	12.00	12.00	12.00
	A	25.00	25.00	25.00	28.00	28.00	28.00	28.00	28.00	28.00	28.00	28.00	30.00
1/2" x 5/16"	de	53.00	57.90	65.90	69.90	74.00	78.00	82.00	86.00	90.01	98.01	106.2	126.30
	dp	49.07	53.06	61.09	65.10	69.11	73.14	77.16	81.19	85.22	93.27	101.33	121.50
	dm	33.00	37.00	45.00	50.00	52.00	56.00	60.00	64.00	68.00	70.00	70.00	80.00
	D1	10.00	10.00	10.00	12.00	12.00	12.00	12.00	12.00	12.00	14.00	14.00	16.00
	A	28.00	28.00	28.00	28.00	28.00	28.00	28.00	28.00	28.00	28.00	28.00	30.00
5/8" x 3/8"	de	68.00	73.00	83.00	88.00	93.00	98.30	103.30	108.40	113.40	123.40	134.00	158.80
	dp	61.34	66.32	76.36	81.37	86.39	91.42	96.45	101.49	106.52	116.58	126.66	151.87
	dm	42.00	47.00	57.00	60.00	60.00	70.00	70.00	75.00	80.00	80.00	80.00	90.00
	D1	12.00	12.00	12.00	12.00	12.00	12.00	14.00	14.00	16.00	16.00	16.00	20.00
	A	30.00	30.00	30.00	30.00	30.00	30.00	30.00	30.00	30.00	30.00	30.00	35.00
3/4" x 7/16"	de	81.50	87.50	99.80	105.50	111.50	118.00	124.20	129.70	136.00	149.00	160.00	-
	dp	73.61	79.59	91.63	97.65	103.67	109.71	115.75	121.78	127.82	139.90	152.00	-
	dm	52.00	58.00	70.00	75.00	80.00	80.00	80.00	80.00	90.00	90.00	90.00	-
	D1	14.00	16.00	16.00	16.00	16.00	16.00	16.00	16.00	16.00	20.00	20.00	-
	A	35.00	35.00	35.00	35.00	35.00	35.00	35.00	35.00	35.00	40.00	40.00	-
1" x 17.02	de	109.00	117.00	133.00	141.00	149.00	157.00	165.20	163.00	181.20	-	-	-
	dp	98.14	106.12	122.17	130.20	138.22	146.28	154.33	162.38	170.43	-	-	-
	dm	69.00	78.00	92.00	100.00	100.00	100.00	100.00	100.00	110.00	-	-	-
	D1	16.00	16.00	16.00	19.00	20.00	20.00	20.00	20.00	20.00	-	-	-
	A	40.00	40.00	40.00	45.00	45.00	45.00	45.00	45.00	50.00	-	-	-

MATERIALE:
ACCIAIO INOX AISI 304 L

PIGNONI SEMPLICI CON DENTI TEMPRATI AD INDUZIONE

DENTI TEMPRATI AD INDUZIONE HRC 45 ÷ 53



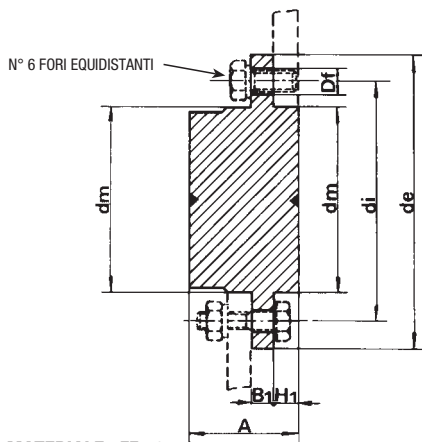
PASSO	Z	13	14	15	16	17	18	19	20	21	23	25	27	30
3/8" x 7/32"	de	43.00	46.50	49.30	52.30	55.30	58.30	61.30	64.30	68.00	73.50	80.00	86.00	94.70
	dp	39.79	42.80	45.81	48.82	51.83	54.85	57.87	60.89	63.91	69.95	76.00	82.05	91.12
	dm	28.00	31.00	34.00	37.00	40.00	43.00	45.00	46.00	48.00	52.00	57.00	60.00	60.00
	D1	10.00	10.00	10.00	10.00	10.00	10.00	10.00	10.00	10.00	12.00	12.00	12.00	12.00
	A	25.00	25.00	25.00	28.00	28.00	28.00	28.00	28.00	28.00	28.00	28.00	28.00	30.00
1/2" x 5/16"	de	57.40	61.80	65.90	69.90	74.00	78.00	82.00	86.00	90.10	98.10	106.20	114.00	126.30
	dp	53.60	57.07	61.09	65.10	69.11	73.14	77.16	81.19	85.22	93.27	101.33	109.40	121.50
	dm	37.00	41.00	45.00	50.00	52.00	56.00	60.00	64.00	68.00	70.00	70.00	70.00	80.00
	D1	10.00	10.00	10.00	12.00	12.00	12.00	12.00	12.00	14.00	14.00	14.00	16.00	16.00
	A	28.00	28.00	28.00	28.00	28.00	28.00	28.00	28.00	28.00	28.00	28.00	30.00	30.00
5/8" x 3/8"	de	73.00	76.20	83.00	88.00	93.00	98.30	103.30	108.40	113.40	123.40	134.00	143.50	158.70
	dp	66.32	71.34	76.36	81.37	86.39	91.42	96.45	101.49	106.52	116.58	126.66	136.74	151.87
	dm	47.00	52.00	57.00	60.00	60.00	70.00	70.00	75.00	80.00	80.00	80.00	80.00	90.00
	D1	12.00	12.00	12.00	12.00	12.00	12.00	14.00	14.00	16.00	16.00	16.00	16.00	20.00
	A	30.00	30.00	30.00	30.00	30.00	30.00	30.00	30.00	30.00	30.00	30.00	30.00	35.00
3/4" x 7/16"	de	87.50	93.80	99.80	105.50	111.50	118.00	124.20	129.70	136.00	149.00	160.00	171.60	189.80
	dp	79.59	85.61	91.63	97.65	103.67	109.71	115.75	121.78	127.82	139.90	152.00	164.09	182.25
	dm	58.00	64.00	70.00	75.00	80.00	80.00	80.00	80.00	90.00	90.00	90.00	90.00	95.00
	D1	14.00	16.00	16.00	16.00	16.00	16.00	16.00	16.00	20.00	20.00	20.00	20.00	20.00
	A	35.00	35.00	35.00	35.00	35.00	35.00	35.00	35.00	40.00	40.00	40.00	40.00	40.00
1" x 17.02	de	117.00	125.70	133.00	141.00	149.00	157.00	165.20	173.00	181.20	197.60	213.70	229.60	254.60
	dp	106.12	114.15	122.17	130.20	138.22	146.28	154.33	162.38	170.43	186.54	202.66	218.79	243.00
	dm	78.00	84.00	92.00	100.00	100.00	100.00	100.00	100.00	110.00	110.00	110.00	110.00	120.00
	D1	16.00	16.00	16.00	19.00	20.00	20.00	20.00	20.00	20.00	20.00	20.00	20.00	20.00
	A	40.00	40.00	40.00	45.00	45.00	45.00	45.00	45.00	50.00	50.00	50.00	50.00	50.00

MATERIALE: C 45 UNI 7845



MOZZI SMONTABILI PER CORONE

Mozzo da una parte per ruota a catena



MATERIALE: FE 50

Nr.	d _e	d _i	d _m ^{h9}	A	D _f	B ₁	H ₁
30	55	45	30	20.0	4.2	4	3.0
40	70	58	40	25.0	5.2	5	5.2
50	80	67	50	32.0	6.2	7	7.0
60	90	76	60	38.5	6.2	7	8.7
70	110	94	70	45.5	8.2	8	10.5
80	130	107	80	55.0	8.2	12	15.0
100	170	140	100	73.0	10.2	17	23.0
140	220	182	140	83.0	12.2	20	23.0
160	245	205	160	93.0	16.5	25	25.0