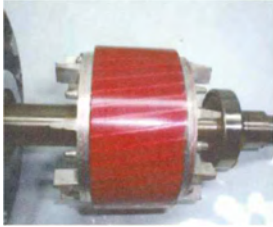


Stainless steel *Motors*

Three Phase 230-400 50 hz, Metric B14, 4 poles, class F Insulation.



1) 300 Series Stainless Steel Construction.

2) Inverter duty

3) Washdown Duty Applications.

4) BISSC Certified.

5) Pharmaceutical & Food Processing.

6) Beverage Industry.

7) Mill and Chemical Duty.

8) Corrosion Resistant.

9) Laser Etched Nameplate.

10) Oversized Bearings on both ends
c/w Locked Drive-end Bearing
Construction.

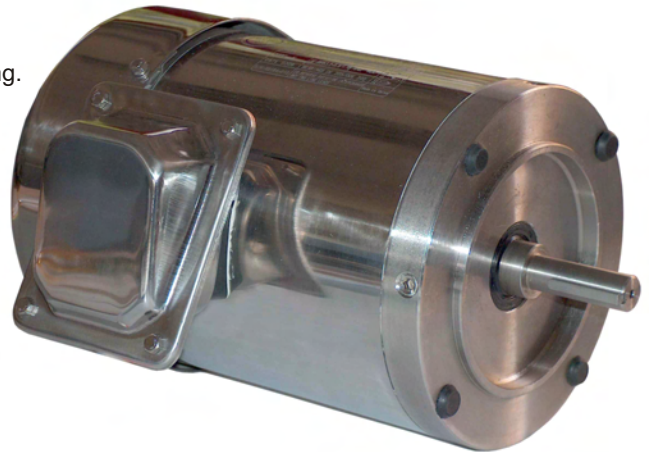
11) Oversized Conduit Box c/w Lead
Seal.

12) Drill & Tapped Drains.

13) T-Drain included.

14) Double Lip Contact Seals.

15) IP 65



Power

Motor size

0.18 Kw

63 B14

0.25 Kw

71 B14

0.37 Kw

71 B14

0.55 Kw

80 B14

0.75 Kw

80 B14

1.10 Kw

90 B14

1.50 Kw

90 B14

2.20 Kw

100 B14

